

## **TWO CASE STUDIES**

**1.**

**THE ENRICHED DESCRIPTION OF THE PATTERN BOOKS AND ORNAMENTAL PRINTS  
PUBLISHED IN THE 19th AND 20th CENTURIES  
IN EUROPE**

**2.**

**THE ENRICHED DESCRIPTION OF THE PLASTER CASTS  
USED IN EDUCATIONAL ENVIRONMENT**

from research perspective

**Julia Katona**

ICOM, Milano 3 July 2016

# SCHOLA GRAPHIDIS ART COLLECTION

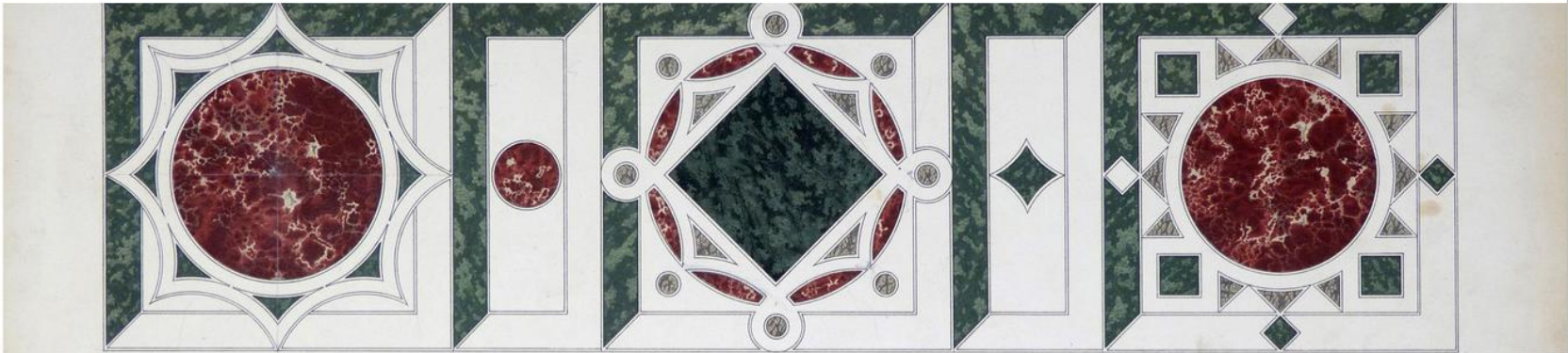
— [HOME](#) [ORNAMENTAL PRINTS](#) [PRINTS AND DRAWINGS](#) [PHOTOGRAPHS](#) [PLASTER CASTS](#) [THE COLLECTIONS](#) [HU](#) —



**RARE BOOK COLLECTION (PATTERN BOOKS, ORNAMENTAL PRINTS, PRINTS)**

# SCHOLA GRAPHIDIS ART COLLECTION

— [HOME](#) [ORNAMENTAL PRINTS](#) [PRINTS AND DRAWINGS](#) [PHOTOGRAPHS](#) [PLASTER CASTS](#) [THE COLLECTIONS](#) [HU](#) —



RARE BOOK COLLECTION (PATTERN BOOKS, ORNAMENTAL PRINTS, PRINTS)

## Ornamental Casts




FileEditViewHistoryBookmarksToolsHelp

Levelek – Kato...Schola Graphidi... 'Noli Me Tangere' -...Zimbabwa Web Cl...TerminologyLIDO v1.0 Sche...http://www...avera.xmlOnline XML Edi...http://min...ut.actionGoogle Translate

54.247.69.120/build/movio\_museum/en/39/Schola-Graphidis-Art-Collection,-Hungarian-University-of-Fine-Arts,-Budapest?&paginate\_page1xml editor online

Most VisitedBevezetéscms\_webbuddhizmuscontemp\_orn\_geomcementlapszecessz / ep.ornnyelvi\_ellenorzhampel\_jozsefnewspaperspalyazatokmakettekzebeplus




**Museum Collections Pilot** aims at show casing museum collections with a new presentation model. The enhanced and quality metadata produced by museum curators in respect to LIDO metadata model is generated by MINT and elaborated inside MOVIO. The resources are more than 1.000 content items from more than 20 museum institutions and organized in respect to a thesaurus navigation (similar to Getty's AAT).

HomeExploreSearchInstitutionsAbout

Search

Your position: [Home](#) » [Institutions](#) » Schola Graphidis Art Collection, Hungarian University of Fine Arts, Budapest


## Schola Graphidis Art Collection, Hungarian University of Fine Arts, Budapest



i

+


Textile from Bács county, Szonta



i

+


Textiles from Szepes county, donations of Mrs. László Markay and Mrs. Munkácsy



i

+


Textiles from Naszód, Kolozs county and donation of Fr. Fischbach



i

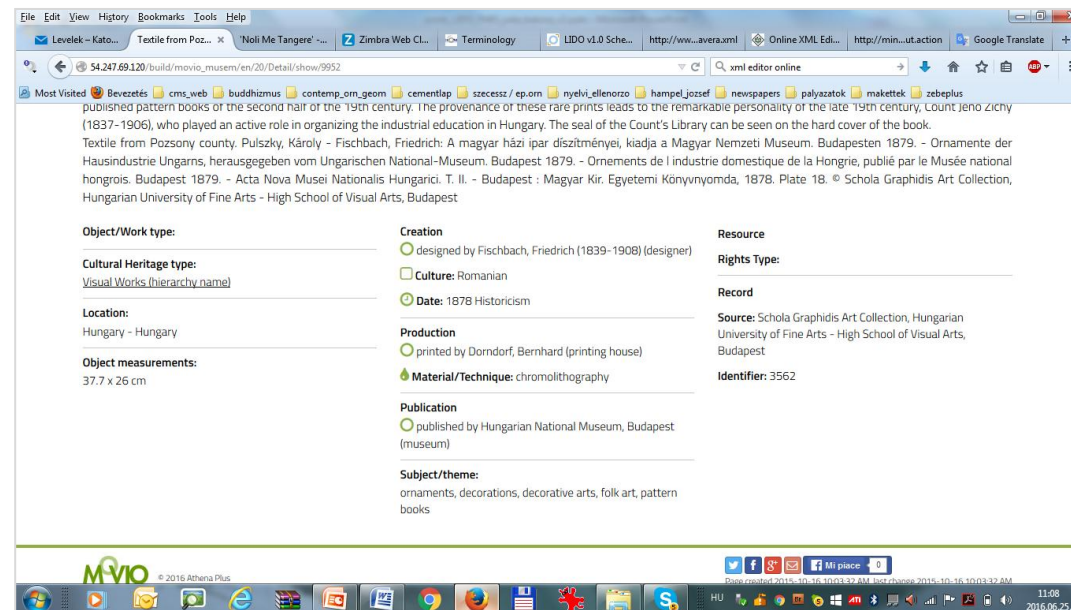
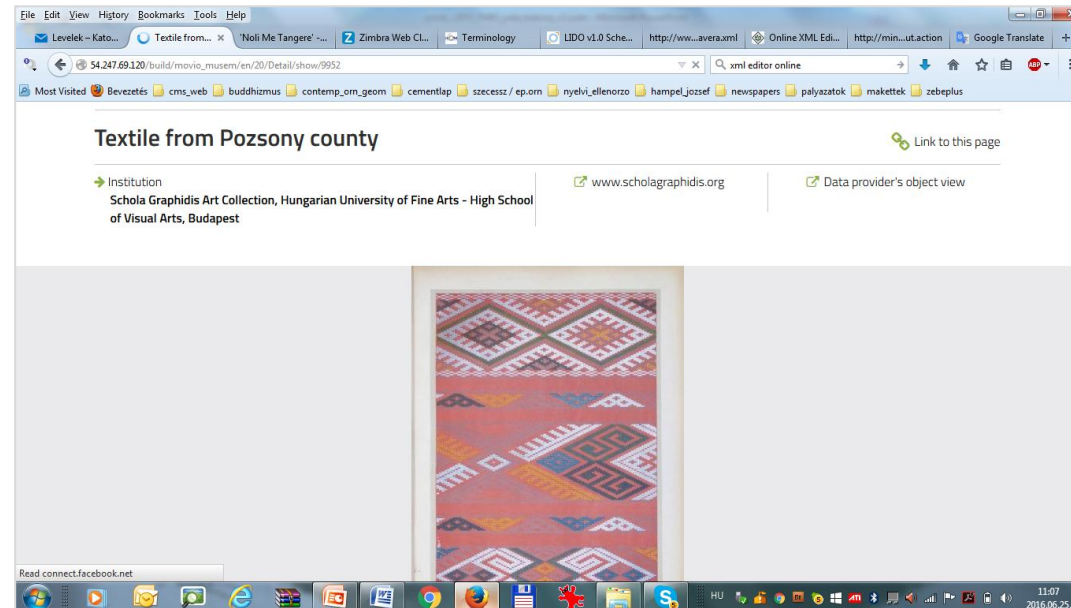
+

Textile from Pozsony county



HU11:072016.06.25.



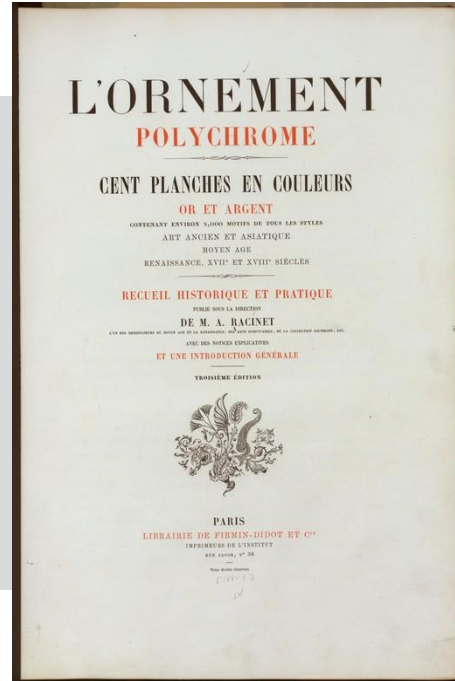


# MOTIF COMPILATIONS

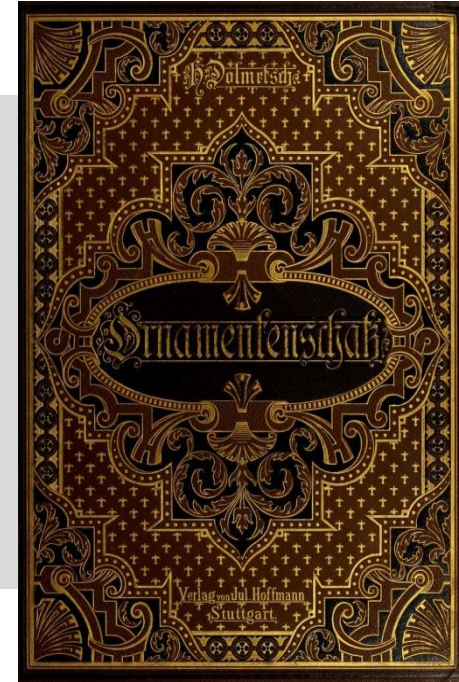
By All Periods



**JONES, O.**  
The Grammar of Ornament  
1856



**RACINET, A.**  
L'ornement polychrome  
1869



**DOLMETSCH, H.**  
Der Ornementenschatz  
1887

# OBJECTIVES OF RESEARCH

[Period: Historicism, Art Nouveau]

## 1.

Network of the architecture, fine arts, applied arts and industrial **schools**  
involved in the industrial development

# OBJECTIVES OF RESEARCH

[Period: Historicism, Art Nouveau]

**1.**

Network of the architecture, fine arts, applied arts and industrial **schools** involved in the industrial development

**2.**

Network of the **actors (persons)** of the architecture, applied arts, industrial and general drawing education



# OBJECTIVES OF RESEARCH

[Period: Historicism, Art Nouveau]

**1.**

Network of the architecture, fine arts, applied arts and industrial **schools** involved in the industrial development

**2.**

Network of the **actors (persons)** of the architecture, applied arts, industrial and general drawing education

**3.**

Linking the representations of the prints to their **models / visual resources**

**Mediatory role** of the pattern books and ornamental prints

# OBJECTIVES OF RESEARCH

[Period: Historicism, Art Nouveau]

1.

Network of the architecture, fine arts, applied arts and industrial **schools** involved in the industrial development

2.

Network of the **actors (persons)** of the architecture, applied arts, industrial and general drawing education

3.

Linking the representations of the prints to their **models / visual resources**

**Mediatory role** of the pattern books and ornamental prints

4.

Network of the **printing houses** of the period  
History of the different **planographic processes** (chromolithography, lithography, photolithography, héliogravure, etc.)

# OBJECTIVES OF RESEARCH

[Period: Historicism, Art Nouveau]

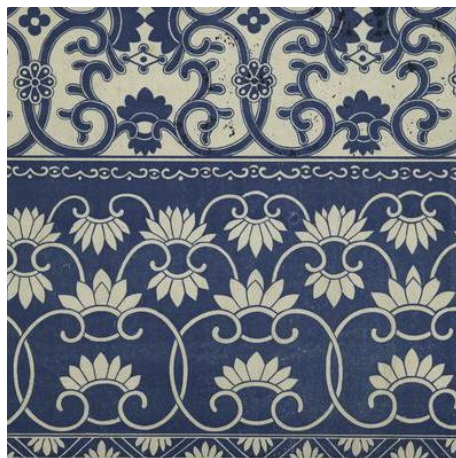
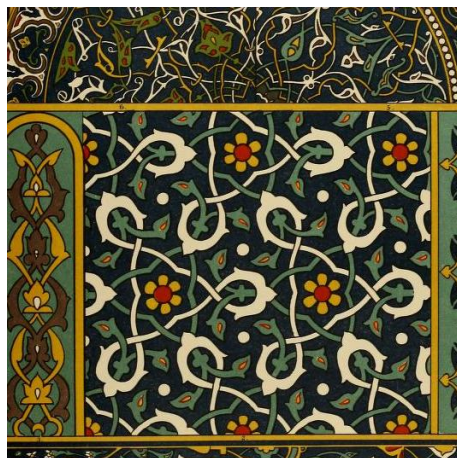
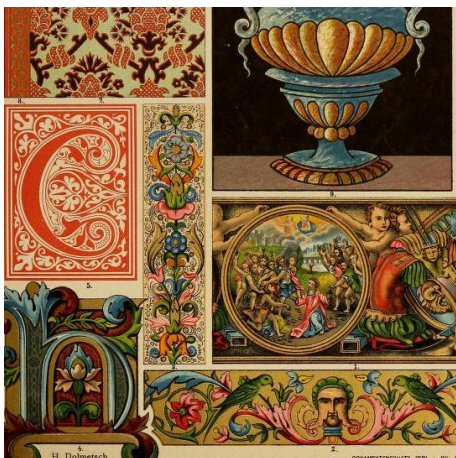
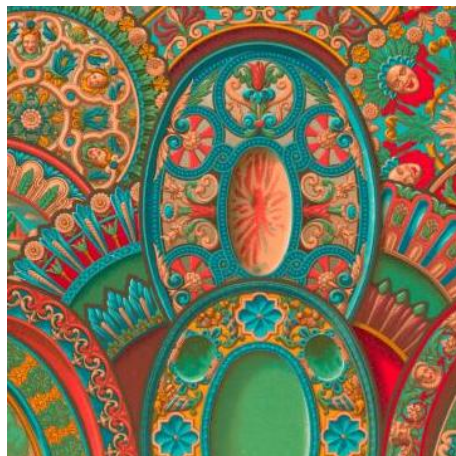
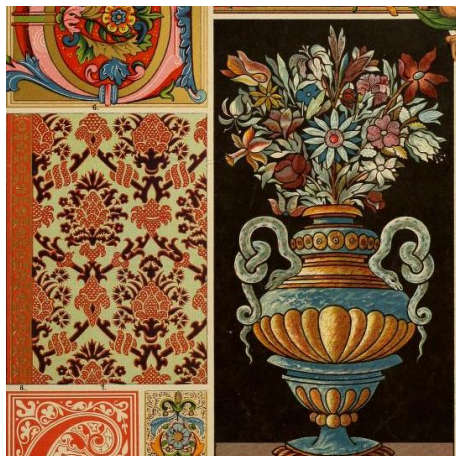
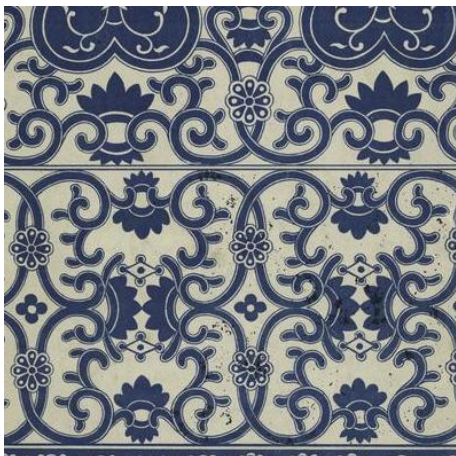
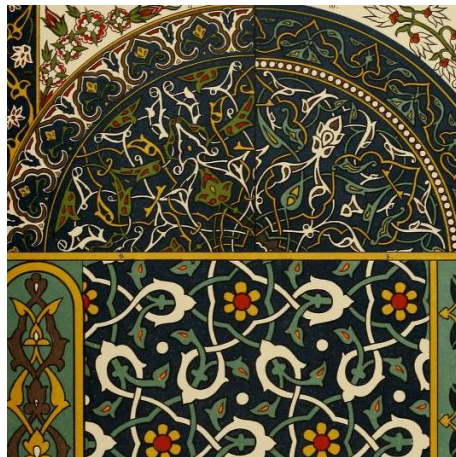
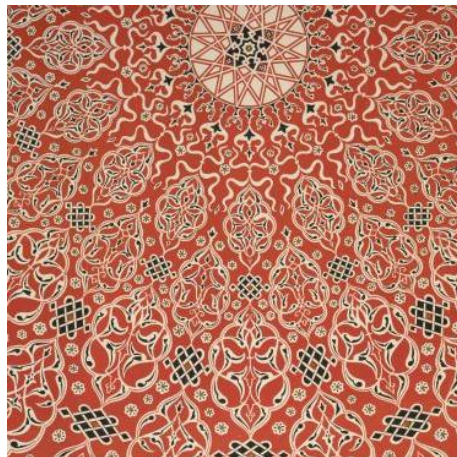
**1.**  
SCHOOLS

**2.**  
PERSONS

**3.**  
RESOURCES

**4.**  
PRINTING HOUSES

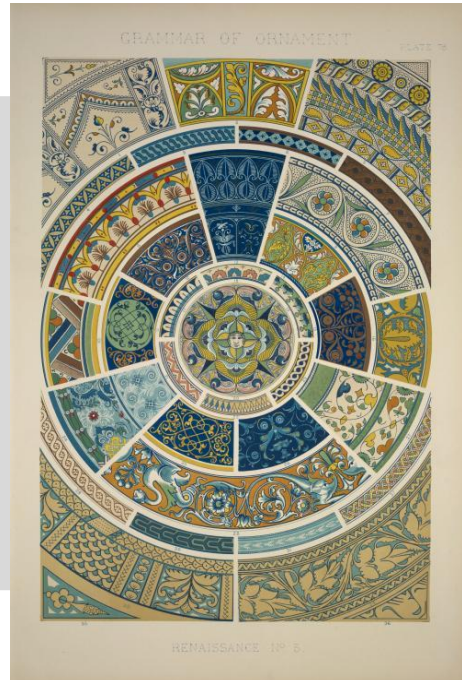




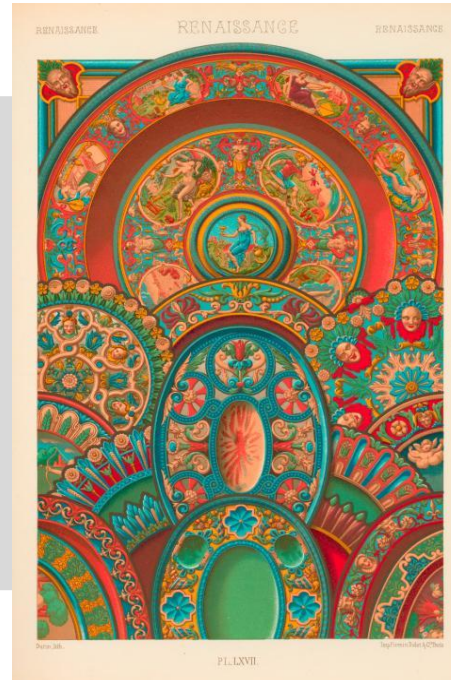


# MOTIF COMPILATIONS

By All Periods



**JONES, O.**  
The Grammar of Ornament  
1856  
Pl. 76  
Renaissance no. 3.



**RACINET, A.**  
L'ornement polychrome  
1869  
Pl. LXVII  
Renaissance



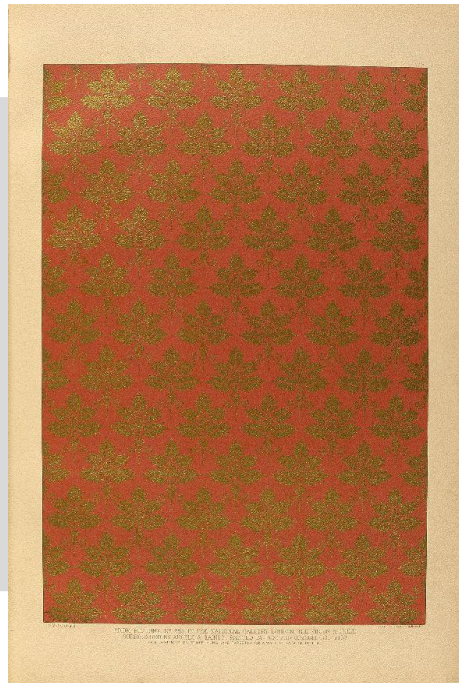
**DOLMETSCH, H.**  
Der Ornementenschatz  
1887  
Taf. 55  
Italienische Renaissance  
Majolika-malerei



## MOTIF COMPILATIONS

Connected to the Applied Arts

Textile Art



**VACHER, S.:** Fifteenth  
century Italian ornament,  
1886




**DUPONT-AUBERVILLE, M.:**  
L'ornement des tissus,  
1877




**FISCHBACH, F.:** Ornamente  
der Gewebe, 1874

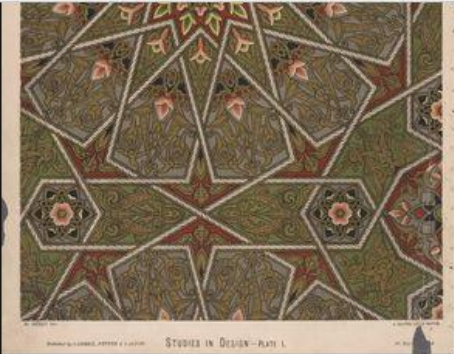
## MOTIF COMPILATIONS




from library item to museum object

 THE NEW YORK PUBLIC LIBRARY  
DIGITAL COLLECTIONS

Search keyword(s) 

Bro






**Ornament in the arabian style, intended to be painted upon a ceiling.**

TYPE OF RESOURCE	DATE ISSUED	DIVISION
still image	1876	The Miriam and Ira ...
ARTIST	LITHOGRAPHER	
Dresser, Christopher	Goater, A.	

[More Details](#) [Cite This Item](#)

IMAGE ID  
1583710

PERMALINK  
<http://digitalcollections.nypl.org/items/1583710>

DOWNLOAD OPTIONS

300px 760px

[All download options](#)

ORDER

Original Scan Art Print

# MOTIF COMPILATIONS

from library item to museum object

digitalcollections.nypl.org/collections/studies-in-design-by-chr-dresser#/tab=about

nypl digital collections

Most Visited Bevezetés cms\_web buddhizmus contemp\_orn\_geom cementlap szecessz / ep.orn nyelvi\_ellenorzo hampel\_jozsef newspapers palyazatok makettek zebeplus

THE NEW YORK PUBLIC LIBRARY  
DIGITAL COLLECTIONS

Search keyword(s)

Collections > Studies in design, by Chr. Dresser ...

**STUDIES IN DESIGN, BY CHR. DRESSER ...**

About Filters

**COLLECTION HISTORY**

The digital collection draws upon the Library's exhibition, "Victorian Ornament: Excerpts from Design History," Dec. 9, 1989 - March 10, 1990, Edna Barnes Salomon Room, and supplements it with additional works through the 1920s. Holdings from the Victorian period, 1839-1900, are particularly strong covering America and Western Europe; these are often pattern or illustrated advice books. Other movements with representative, and often rare, titles include: Neoclassicism, Art Nouveau, Arts & Crafts, and Art Deco.

**BACKGROUND**

The Art & Architecture Collection has long been a repository of unusual plate books, with a core antiquarian collection dating to the initial creation of the Art Division. Many came from the

digitalcollections.nypl.org/items/510d47e3-5bc3-a3d9-e040-e00a18064a99

61 results found

Sort by: ^ Title v Date created v Date digitized ^ Sequence

Ornament in the arabian style...

[Title page.]

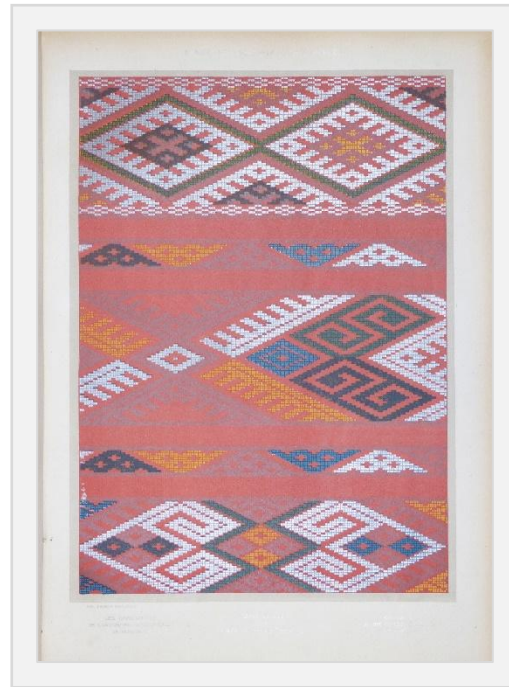
"Parental advice" may be pain...

A frieze of new style. This w...

Two circular compositions of ...

Border ornaments of new style...







## Related Works

## OBJECT

Creator

Pulszky, Károly (1853-1899) (author, text by)  
Fischbach, Friedrich (1839-1908) (designer, designed by)  
Dorndorf, Bernhard (printing house, printed by)  
Hungarian National Museum, Budapest (museum, published by)

## Title

Textile from Pozsony county

## Date \_\_\_\_\_

1878

## Place

Hungary, Austria-Hungary, Germany

## Inventory number

E\_213\_045\_pl\_18

## Materials / Technique

paper, chromatography

## Measurements

37.7 x 26 cm

## Description

The ornamental print illustrates the motifs of different textiles from Naszód (Kolozs county, territory of the

## Provenance

Count Jenů Zichy

## Repository name

The Rare Book Collection of the Schola Graphidis Art Collection,  
Budapest

## Location

Hungary

## REPRESENTATION

## Related Works

Actor

Flóris Rómer (keeper)  
János Xántus (keeper)  
Count Jenő Zichy (donator)

## Institution

Hungarian National Museum, Budapest

## HISTORICAL CONTEXT

## Period

Historicism, 19th century

Related event

World Exposition 1873 Vienna

### Thematic context

Drawing. Design. Applied arts and crafts  
Industrial and domestic arts and crafts. Applied arts  
Graphic art, printmaking. Graphics  
Planographic techniques. Lithography (autolithography)  
Architecture  
Art education  
Industrial education





Related Works

OBJECT

Creator

Pulszky, Károly (1853-1899) (author, text by)  
Fischbach, Friedrich (1839-1908) (designer, designed by)  
Dorndorf, Bernhard (printing house, printed by)  
Hungarian National Museum, Budapest (museum, published by)

Title

Textile from Pozsony county

Date

1878

Place

Hungary, Austria-Hungary, Germany

Inventory number

E\_213\_045\_pl\_18

Materials / Technique

paper, chromolitography

Measurements

37.7 x 26 cm

Description

The ornamental print illustrates the motifs of different textiles from Naszód (Kolozs county, territory of the

Provenance

Count Jenő Zichy

Repository name

The Rare Book Collection of the Schola Graphidis Art Collection, Budapest

Location

Hungary



## Related Works

## OBJECT

Creator

Pulszky, Károly (1853-1899) (author, text by)  
Fischbach, Friedrich (1839-1908) (designer, designed by)  
Dorndorf, Bernhard (printing house, printed by)  
Hungarian National Museum, Budapest (museum, published by)

## Title

Textile from Pozsony county

## Date

1878

## Place

Hungary, Austria-Hungary, Germany

## Inventory number

E\_213\_045\_pl\_18

### Materials / Technique

paper, chromatography

## Measurements

37.7 x 26 cm

### Description

The ornamental print illustrates the motifs of different textiles from Naszód (Kolozs county, territory of the

## Provenance

Count Jenů Zichy

## Repository name

The Rare Book Collection of the Schola Graphidis Art Collection,  
Budapest

## Location

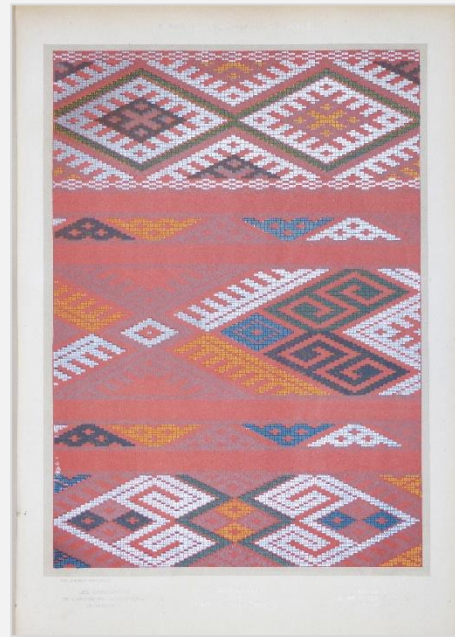
Hungary

### Cultural context

Romanian

## Subjects

- ornaments
- decorations
- folk art
- textile arts
- polychromy
- chromolithography



## REPRESENTATION

## Related Works



## Related Works

## OBJECT

Creator

Pulszky, Károly (1853-1899) (author, text by)  
Fischbach, Friedrich (1839-1908) (designer, designed by)  
Dorndorf, Bernhard (printing house, printed by)  
Hungarian National Museum, Budapest (museum, published by)

## Title

Textile from Pozsony county

## Date \_\_\_\_\_

1878

## Place

Hungary, Austria-Hungary, Germany

## Inventory number

E\_213\_045\_pl\_18

## Materials / Technique

paper, chromatography

## Measurements

37.7 x 26 cm

## Description

The ornamental print illustrates the motifs of different textiles from Naszód (Kolozs county, territory of the

## Provenance

Count Jenů Zichy

## Repository name

The Rare Book Collection of the Schola Graphidis Art Collection,  
Budapest

## Location

Hungary

## REPRESENTATION

## Related Works

Actor

Flóris Rómer (keeper)  
János Xántus (keeper)  
Count Jenő Zichy (donator)

## Institution

Hungarian National Museum, Budapest

## HISTORICAL CONTEXT

## Period

Historicism, 19th century

Related event

World Exposition 1873 Vienna

### Thematic context

Drawing. Design. Applied arts and crafts  
Industrial and domestic arts and crafts. Applied arts  
Graphic art, printmaking. Graphics  
Planographic techniques. Lithography (autolithography)  
Architecture  
Art education  
Industrial education

PURPOSE OF RESEARCH	UNITS OF DESCRIPTION	FIELDS	LIDO	QUESTIONS	THESAURI
PERSONS PRINTING HOUSES	OBJECT	Creator	[lido:eventActor] lido:actor lido:roleActor lido:extentActor		
		Title	lido:titleSet		
		Date	[lido:eventSet with lido:eventType] lido:eventDate		
		Place	[lido:eventPlace] lido:place		
		Inventory number	[lido:repositorySet with lido:type: „current"] lido:workID		
		Materials / Technique	[lido:eventSet with lido:eventType] lido:eventMaterialsTech		
		Measurements	lido:objectMeasurementsSet - lido:displayObjectMeasurements		
		Description	lido:objectDescriptionSet - lido:descriptiveNoteValue		
PERSONS		Provenance / Name	?		
		Provenance / Date	[lido:eventSet@lido:eventType=„provenance"] lido:eventDate		
		Repository name	[lido:repositorySet@lido:type=“current"] lido:repositoryName		
		Location	[lido:repositorySet@lido:type=“current"] lido:repositoryLocation		
	REPRESENTATION	Related works	lido:relatedWorkSet with - lido:relatedWork-> lido:objectWebResource and lido:objectNote - lido:relatedWorkRelType		
		Cultural context	? [lido:eventSet with lido:eventType] - lido:culture	[eventSet] – in the case of the ornamental prints, it is associated with the subject and not with the event	
		Subject	lido:subjectSet with - lido:subjectConcept or lido:subjectActor or lido:subjectDate or lido:subjectPlace		
RESOURCES		Related works	lido:relatedWorkSet with - lido:relatedWork-> lido:objectWebResource and lido:objectNote - lido:relatedWorkRelType		
PERSONS	HISTORICAL CONTEXT	Actor	?	The <b>Persons</b> who are not involved directly in the production of the object, but involved in the broader context of the production? They do not belong either to the subjectSet.	
SCHOOLS		Institution	?	The <b>Institutions</b> who are not involved directly in the production of the object, but involved in the broader context of the production? They do not belong either to the subjectSet.	
		Period	[lido:eventSet with lido:eventType] - lido:periodName	[eventSet]	
		Related event	? [lido:relatedEventSet]	The <b>world exhibitions’</b> data do not belong to the subjectSet, since these events are not the subjects of the object. Is that OK if I interpret this data in the relatedEventSet?	
		Thematic context	lido:classification with @lido:type=“universal classification” and @lido:source=“UDC”		

PURPOSE OF RESEARCH	UNITS OF DESCRIPTION	FIELDS	LIDO	QUESTIONS	THESAURI
PERSONS PRINTING HOUSES	OBJECT	Creator	[lido:eventActor] lido:actor lido:roleActor lido:extentActor		
		Title	lido:titleSet		
		Date	[lido:eventSet with lido:eventType] lido:eventDate		
		Place	[lido:eventPlace] lido:place		
		Inventory number	[lido:repositorySet with lido:type: „current"] lido:workID		
		Materials / Technique	[lido:eventSet with lido:eventType] lido:eventMaterialsTech		
		Measurements	lido:objectMeasurementsSet - lido:displayObjectMeasurements		
		Description	lido:objectDescriptionSet - lido:descriptiveNoteValue		
PERSONS		Provenance / Name	?		
		Provenance / Date	[lido:eventSet@lido:eventType=„provenance"] lido:eventDate		
	REPRESENTATION	Repository name	[lido:repositorySet@lido:type=„current"] lido:repositoryName		
		Location	[lido:repositorySet@lido:type=„current"] lido:repositoryLocation		
		Related works	lido:relatedWorkSet with - lido:relatedWork-> lido:objectWebResource and lido:objectNote - lido:relatedWorkRelType		
	REPRESENTATION	Cultural context	? [lido:eventSet with lido:eventType] - lido:culture	[eventSet] – in the case of the ornamental prints, it is associated with the subject and not with the event	
		Subject	lido:subjectSet with - lido:subjectConcept or lido:subjectActor or lido:subjectDate or lido:subjectPlace		
RESOURCES		Related works	lido:relatedWorkSet with - lido:relatedWork-> lido:objectWebResource and lido:objectNote - lido:relatedWorkRelType		
PERSONS	HISTORICAL CONTEXT	Actor	?	The <b>Persons</b> who are not involved directly in the production of the object, but involved in the broader context of the production? They do not belong either to the subjectSet.	
SCHOOLS		Institution	?	The <b>Institutions</b> who are not involved directly in the production of the object, but involved in the broader context of the production? They do not belong either to the subjectSet.	
		Period	[lido:eventSet with lido:eventType] - lido:periodName	[eventSet]	
		Related event	? [lido:relatedEventSet]	The <b>world exhibitions'</b> data do not belong to the subjectSet, since these events are not the subjects of the object. Is that OK if I interpret this data in the relatedEventSet?	
		Thematic context	lido:classification with @lido:type=„universal classification" and @lido:source=„UDC"		



PURPOSE OF RESEARCH	UNITS OF DESCRIPTION	FIELDS	LIDO	QUESTIONS	THESAURI
PERSONS PRINTING HOUSES	OBJECT	Creator	[lido:eventActor] lido:actor lido:roleActor lido:extentActor		
		Title	lido:titleSet		
		Date	[lido:eventSet with lido:eventType] lido:eventDate		
		Place	[lido:eventPlace] lido:place		
		Inventory number	[lido:repositorySet with lido:type: „current”] lido:workID		
		Materials / Technique	[lido:eventSet with lido:eventType] lido:eventMaterialsTech		
		Measurements	lido:objectMeasurementsSet - lido:displayObjectMeasurements		
		Description	lido:objectDescriptionSet - lido:descriptiveNoteValue		
PERSONS		Provenance / Name	?		
		Provenance / Date	[lido:eventSet@lido:eventType=„provenance”] lido:eventDate		
		Repository name	[lido:repositorySet@lido:type=“current”] lido:repositoryName		
		Location	[lido:repositorySet@lido:type=“current”] lido:repositoryLocation		
	REPRESENTATION	Related works	lido:relatedWorkSet with - lido:relatedWork-> lido:objectWebResource and lido:objectNote - lido:relatedWorkRelType		
		Cultural context	? [lido:eventSet with lido:eventType] - lido:culture	[eventSet] – in the case of the ornamental prints, it is associated with the subject and not with the event	
		Subject	lido:subjectSet with - lido:subjectConcept or lido:subjectActor or lido:subjectDate or lido:subjectPlace		
RESOURCES		Related works	lido:relatedWorkSet with - lido:relatedWork-> lido:objectWebResource and lido:objectNote - lido:relatedWorkRelType		
PERSONS	HISTORICAL CONTEXT	Actor	?	The <b>Persons</b> who are not involved directly in the production of the object, but involved in the broader context of the production? They do not belong either to the subjectSet.	
SCHOOLS		Institution	?	The <b>Institutions</b> who are not involved directly in the production of the object, but involved in the broader context of the production? They do not belong either to the subjectSet.	
		Period	[lido:eventSet with lido:eventType] - lido:periodName	[eventSet]	
		Related event	? [lido:relatedEventSet]	The <b>world exhibitions’</b> data do not belong to the subjectSet, since these events are not the subjects of the object. Is that OK if I interpret this data in the relatedEventSet?	
		Thematic context	lido:classification with @lido:type=“universal classification” and @lido:source=“UDC”		

PURPOSE OF RESEARCH	UNITS OF DESCRIPTION	FIELDS	LIDO	QUESTIONS	THESAURI
PERSONS PRINTING HOUSES	OBJECT	Creator	[lido:eventActor] lido:actor lido:roleActor lido:extentActor		
		Title	lido:titleSet		
		Date	[lido:eventSet with lido:eventType] lido:eventDate		
		Place	[lido:eventPlace] lido:place		
		Inventory number	[lido:repositorySet with lido:type: „current"] lido:workID		
		Materials / Technique	[lido:eventSet with lido:eventType] lido:eventMaterialsTech		
		Measurements	lido:objectMeasurementsSet - lido:displayObjectMeasurements		
		Description	lido:objectDescriptionSet - lido:descriptiveNoteValue		
PERSONS		Provenance / Name	?		
		Provenance / Date	[lido:eventSet@lido:eventType=„provenance"] lido:eventDate		
	REPRESENTATION	Repository name	[lido:repositorySet@lido:type=„current"] lido:repositoryName		
		Location	[lido:repositorySet@lido:type=„current"] lido:repositoryLocation		
		Related works	lido:relatedWorkSet with - lido:relatedWork-> lido:objectWebResource and lido:objectNote - lido:relatedWorkRelType		
	REPRESENTATION	Cultural context	? [lido:eventSet with lido:eventType] - lido:culture	[eventSet] – in the case of the ornamental prints, it is associated with the subject and not with the event	
		Subject	lido:subjectSet with - lido:subjectConcept or lido:subjectActor or lido:subjectDate or lido:subjectPlace		
RESOURCES		Related works	lido:relatedWorkSet with - lido:relatedWork-> lido:objectWebResource and lido:objectNote - lido:relatedWorkRelType		
PERSONS	HISTORICAL CONTEXT	Actor	?	The <b>Persons</b> who are not involved directly in the production of the object, but involved in the broader context of the production? They do not belong either to the subjectSet.	
SCHOOLS		Institution	?	The <b>Institutions</b> who are not involved directly in the production of the object, but involved in the broader context of the production? They do not belong either to the subjectSet.	
		Period	[lido:eventSet with lido:eventType] - lido:periodName	[eventSet]	
		Related event	? [lido:relatedEventSet]	The <b>world exhibitions'</b> data do not belong to the subjectSet, since these events are not the subjects of the object. Is that OK if I interpret this data in the relatedEventSet?	
		Thematic context	lido:classification with @lido:type=„universal classification" and @lido:source=„UDC"		

PURPOSE OF RESEARCH	UNITS OF DESCRIPTION	FIELDS	LIDO	QUESTIONS	THESAURI
PERSONS PRINTING HOUSES	OBJECT	Creator	[lido:eventActor] lido:actor lido:roleActor lido:extentActor		
		Title	lido:titleSet		
		Date	[lido:eventSet with lido:eventType] lido:eventDate		
		Place	[lido:eventPlace] lido:place		
		Inventory number	[lido:repositorySet with lido:type: „current”] lido:workID		
		Materials / Technique	[lido:eventSet with lido:eventType] lido:eventMaterialsTech		
		Measurements	lido:objectMeasurementsSet - lido:displayObjectMeasurements		
		Description	lido:objectDescriptionSet - lido:descriptiveNoteValue		
PERSONS		Provenance / Name	?		
		Provenance / Date	[lido:eventSet@lido:eventType=„provenance”] lido:eventDate		
		Repository name	[lido:repositorySet@lido:type=“current”] lido:repositoryName		
		Location	[lido:repositorySet@lido:type=“current”] lido:repositoryLocation		
	REPRESENTATION	Related works	lido:relatedWorkSet with - lido:relatedWork-> lido:objectWebResource and lido:objectNote - lido:relatedWorkRelType		
		Cultural context	? [lido:eventSet with lido:eventType] - lido:culture	[eventSet] – in the case of the ornamental prints, it is associated with the subject and not with the event	
		Subject	lido:subjectSet with - lido:subjectConcept or lido:subjectActor or lido:subjectDate or lido:subjectPlace		
RESOURCES		Related works	lido:relatedWorkSet with - lido:relatedWork-> lido:objectWebResource and lido:objectNote - lido:relatedWorkRelType		
PERSONS	HISTORICAL CONTEXT	Actor	?	The <b>Persons</b> who are not involved directly in the production of the object, but involved in the broader context of the production? They do not belong either to the subjectSet.	
SCHOOLS		Institution	?	The <b>Institutions</b> who are not involved directly in the production of the object, but involved in the broader context of the production? They do not belong either to the subjectSet.	
		Period	[lido:eventSet with lido:eventType] - lido:periodName	[eventSet]	
		Related event	? [lido:relatedEventSet]	The <b>world exhibitions’</b> data do not belong to the subjectSet, since these events are not the subjects of the object. Is that OK if I interpret this data in the relatedEventSet?	
		Thematic context	lido:classification with @lido:type=“universal classification” and @lido:source=“UDC”		

PURPOSE OF RESEARCH	UNITS OF DESCRIPTION	FIELDS	LIDO	QUESTIONS	THESAURI
PERSONS PRINTING HOUSES	OBJECT	Creator	[lido:eventActor] lido:actor lido:roleActor lido:extentActor		
		Title	lido:titleSet		
		Date	[lido:eventSet with lido:eventType] lido:eventDate		
		Place	[lido:eventPlace] lido:place		
		Inventory number	[lido:repositorySet with lido:type: „current”] lido:workID		
		Materials / Technique	[lido:eventSet with lido:eventType] lido:eventMaterialsTech		
		Measurements	lido:objectMeasurementsSet - lido:displayObjectMeasurements		
		Description	lido:objectDescriptionSet - lido:descriptiveNoteValue		
PERSONS		Provenance / Name	?		
		Provenance / Date	[lido:eventSet@lido:eventType=„provenance”] lido:eventDate		
		Repository name	[lido:repositorySet@lido:type=“current”] lido:repositoryName		
		Location	[lido:repositorySet@lido:type=“current”] lido:repositoryLocation		
	REPRESENTATION	Related works	lido:relatedWorkSet with - lido:relatedWork-> lido:objectWebResource and lido:objectNote - lido:relatedWorkRelType		
		Cultural context	? [lido:eventSet with lido:eventType] - lido:culture	[eventSet] – in the case of the ornamental prints, it is associated with the subject and not with the event	
		Subject	lido:subjectSet with - lido:subjectConcept or lido:subjectActor or lido:subjectDate or lido:subjectPlace		
RESOURCES		Related works	lido:relatedWorkSet with - lido:relatedWork-> lido:objectWebResource and lido:objectNote - lido:relatedWorkRelType		
PERSONS	HISTORICAL CONTEXT	Actor	?	The <b>Persons</b> who are not involved directly in the production of the object, but involved in the broader context of the production? They do not belong either to the subjectSet.	
SCHOOLS		Institution	?	The <b>Institutions</b> who are not involved directly in the production of the object, but involved in the broader context of the production? They do not belong either to the subjectSet.	
		Period	[lido:eventSet with lido:eventType] - lido:periodName	[eventSet]	
		Related event	? [lido:relatedEventSet]	The <b>world exhibitions’</b> data do not belong to the subjectSet, since these events are not the subjects of the object. Is that OK if I interpret this data in the relatedEventSet?	
		Thematic context	lido:classification with @lido:type=“universal classification” and @lido:source=“UDC”		



Related Works

OBJECT

Creator

Pulszky, Károly (1853-1899) (author, text by)  
Fischbach, Friedrich (1839-1908) (designer, designed by)  
Dorndorf, Bernhard (printing house, printed by)  
Hungarian National Museum, Budapest (museum, published by)

Title

Textile from Pozsony county

Date

1878

Place

Hungary, Austria-Hungary, Germany

Inventory number

E\_213\_045\_pl\_18

Materials / Technique

paper, chromolitography

Measurements

37.7 x 26 cm

Description

The ornamental print illustrates the motifs of different textiles from Naszód (Kolozs county, territory of the

Provenance

Count Jenő Zichy

Repository name

The Rare Book Collection of the Schola Graphidis Art Collection, Budapest

Location

Hungary





## Related Works

## OBJECT

**Creator**

Pulszky, Károly (1853-1899) (author, text by)  
Fischbach, Friedrich (1839-1908) (designer, designed by)  
Dorndorf, Bernhard (printing house, printed by)  
Hungarian National Museum, Budapest (museum, published by)

## Title

Textile from Pozsony county

## Date \_\_\_\_\_

1878

## Place

Hungary, Austria-Hungary, Germany

## Inventory number

E\_213\_045\_pl\_18

## Materials / Technique

paper, chromatography

## Measurements

37.7 x 26 cm

## Description

The ornamental print illustrates the motifs of different textiles from Naszód (Kolozs county, territory of the

## Provenance

Count Jenő Zichy

## Repository name

The Rare Book Collection of the Schola Graphidis Art Collection,  
Budapest

## Location

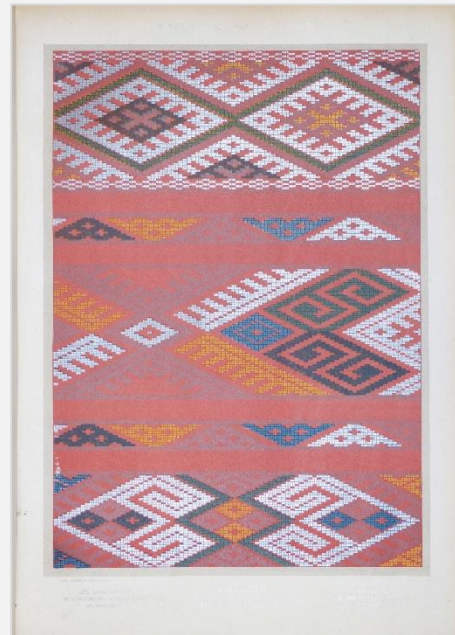
Hungary

### Cultural context

Romanian

## Subjects

- ornaments
- decorations
- folk art
- textile arts
- polychromy
- chromolithography



## REPRESENTATION

## Related Works



## Related Works

## OBJECT

Creator

Pulszky, Károly (1853-1899) (author, text by)  
Fischbach, Friedrich (1839-1908) (designer, designed by)  
Dorndorf, Bernhard (printing house, printed by)  
Hungarian National Museum, Budapest (museum, published by)

## Title

Textile from Pozsony county

## Date \_\_\_\_\_

1878

## Place

Hungary, Austria-Hungary, Germany

## Inventory number

E\_213\_045\_pl\_18

## Materials / Technique

paper, chromatography

## Measurements

37.7 x 26 cm

## Description

The ornamental print illustrates the motifs of different textiles from Naszód (Kolozs county, territory of the

## Provenance

Count Jenů Zichy

## Repository name

The Rare Book Collection of the Schola Graphidis Art Collection,  
Budapest

## Location

Hungary

## REPRESENTATION

## Related Works

Actor

Flóris Rómer (keeper)  
János Xántus (keeper)  
Count Jenő Zichy (donator)

## Institution

Hungarian National Museum, Budapest

## HISTORICAL CONTEXT

## Period

Historicism, 19th century

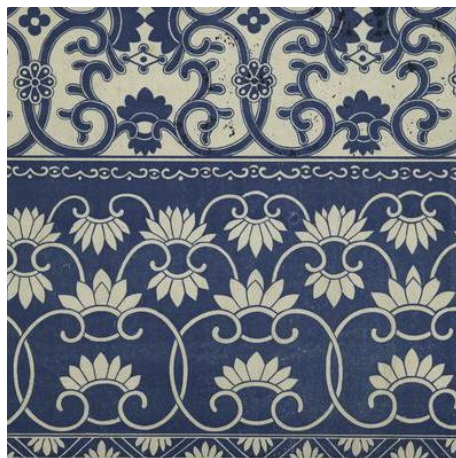
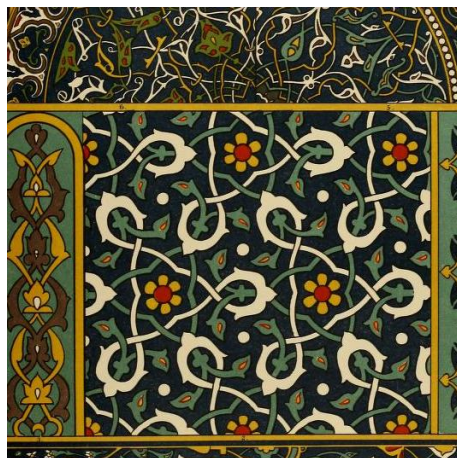
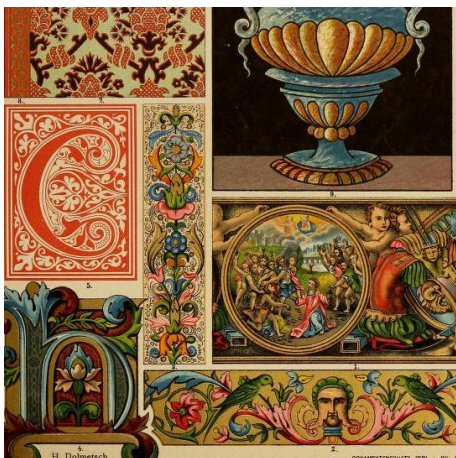
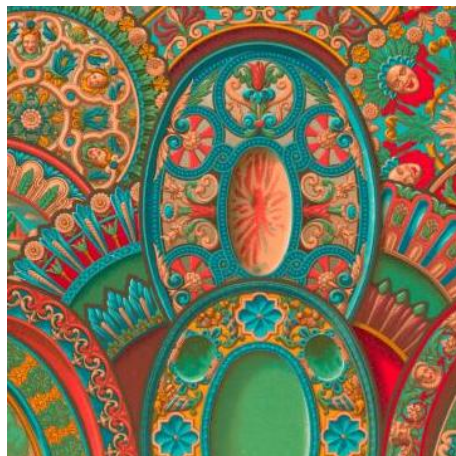
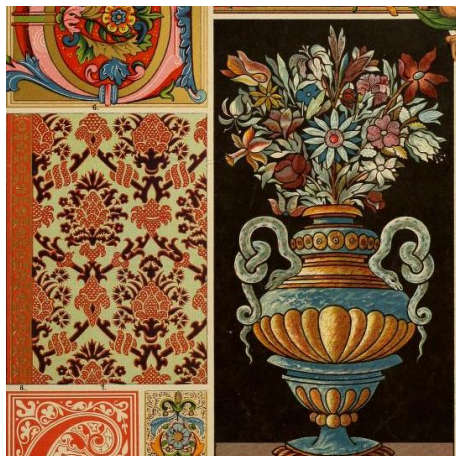
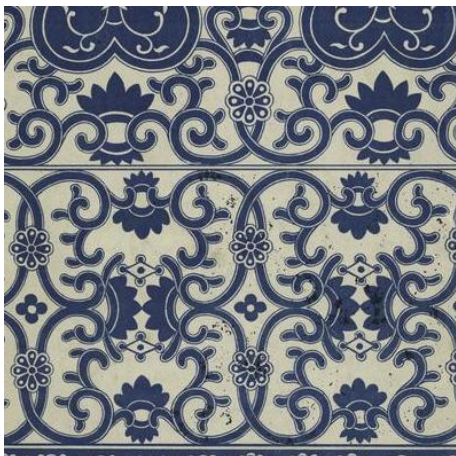
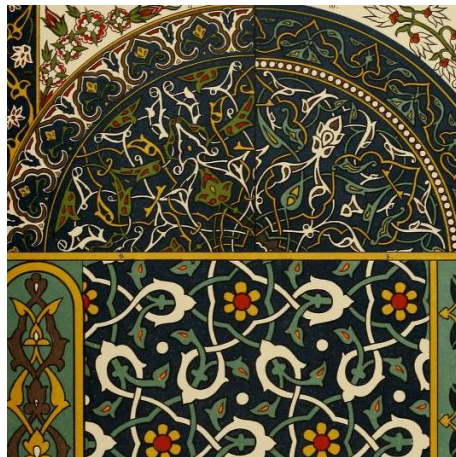
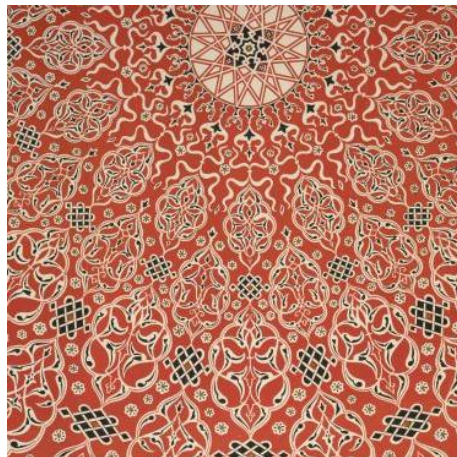
Related event

World Exposition 1873 Vienna

### Thematic context

Drawing. Design. Applied arts and crafts  
Industrial and domestic arts and crafts. Applied arts  
Graphic art, printmaking. Graphics  
Planographic techniques. Lithography (autolithography)  
Architecture  
Art education  
Industrial education







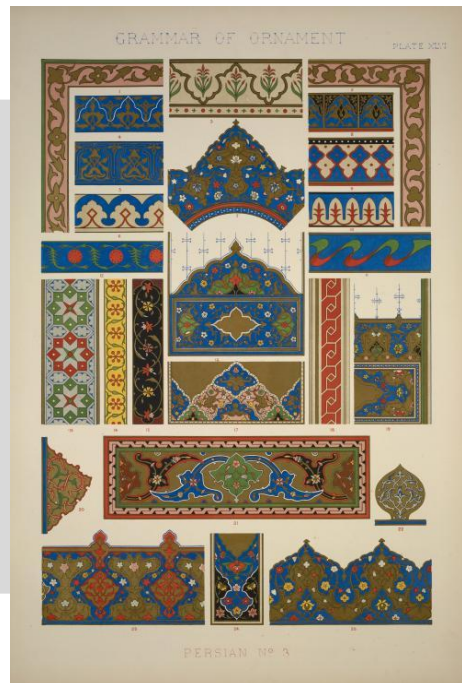
PURPOSE OF RESEARCH	UNITS OF DESCRIPTION	FIELDS	LIDO	QUESTIONS	THESAURI
PERSONS PRINTING HOUSES	OBJECT	Creator	[lido:eventActor] lido:actor lido:roleActor lido:extentActor		
		Title	lido:titleSet		
		Date	[lido:eventSet with lido:eventType] lido:eventDate		
		Place	[lido:eventPlace] lido:place		
		Inventory number	[lido:repositorySet with lido:type: „current"] lido:workID		
		Materials / Technique	[lido:eventSet with lido:eventType] lido:eventMaterialsTech		
		Measurements	lido:objectMeasurementsSet - lido:displayObjectMeasurements		
		Description	lido:objectDescriptionSet - lido:descriptiveNoteValue		
PERSONS		Provenance / Name	?		
		Provenance / Date	[lido:eventSet@lido:eventType=„provenance"] lido:eventDate		
		Repository name	[lido:repositorySet@lido:type=„current"] lido:repositoryName		
		Location	[lido:repositorySet@lido:type=„current"] lido:repositoryLocation		
	REPRESENTATION	Related works	lido:relatedWorkSet with - lido:relatedWork-> lido:objectWebResource and lido:objectNote - lido:relatedWorkRelType		
		Cultural context	? [lido:eventSet with lido:eventType] - lido:culture	[eventSet] – in the case of the ornamental prints, it is associated with the subject and not with the event	
		Subject	lido:subjectSet with - lido:subjectConcept or lido:subjectActor or lido:subjectDate or lido:subjectPlace		
RESOURCES		Related works	lido:relatedWorkSet with - lido:relatedWork-> lido:objectWebResource and lido:objectNote - lido:relatedWorkRelType		
PERSONS	HISTORICAL CONTEXT	Actor	?	The <b>Persons</b> who are not involved directly in the production of the object, but involved in the broader context of the production? They do not belong either to the subjectSet.	
SCHOOLS		Institution	?	The <b>Institutions</b> who are not involved directly in the production of the object, but involved in the broader context of the production? They do not belong either to the subjectSet.	
		Period	[lido:eventSet with lido:eventType] - lido:periodName	[eventSet]	
		Related event	? [lido:relatedEventSet]	The <b>world exhibitions'</b> data do not belong to the subjectSet, since these events are not the subjects of the object. Is that OK if I interpret this data in the relatedEventSet?	
		Thematic context	lido:classification with @lido:type=„universal classification" and @lido:source=„UDC"		



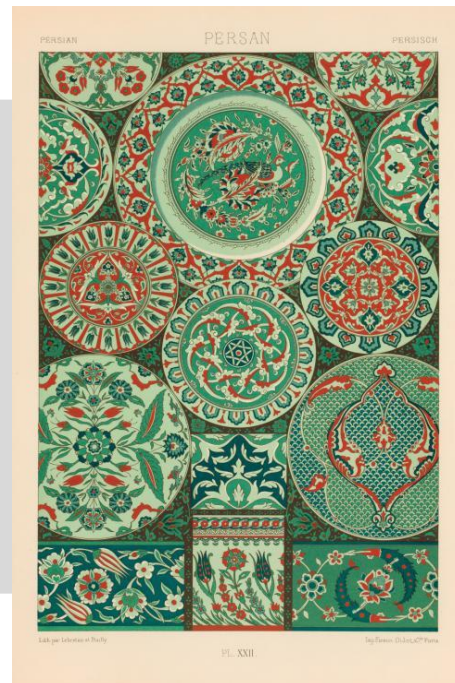


# MOTIF COMPILATIONS

By All Periods



**JONES, O.**  
The Grammar of Ornament  
1856  
Pl. XLVI  
Persian no. 3.



**RACINET, A.**  
L'ornement polychrome  
1869  
Pl. XXII  
Persan

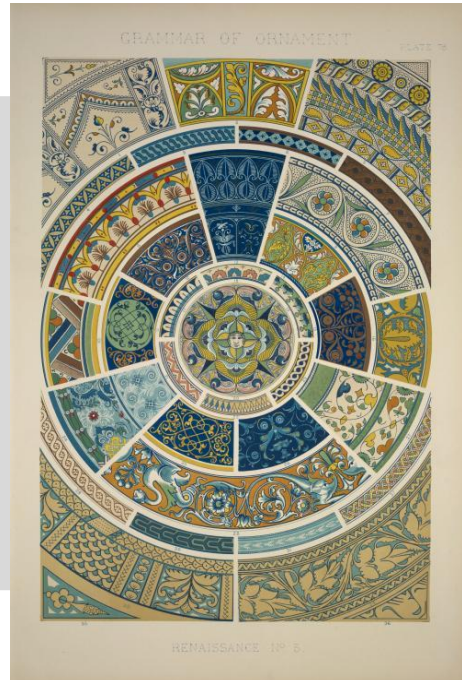


**DOLMETSCH, H.**  
Der Ornementenschatz  
1887  
Taf. 19  
Persisch. Keramik

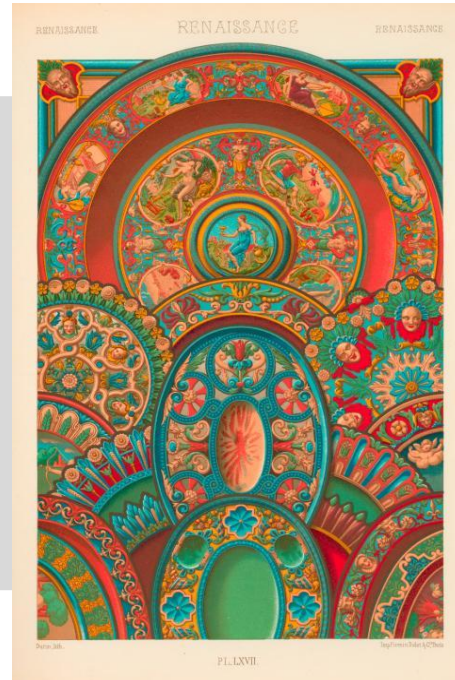


# MOTIF COMPILATIONS

By All Periods



**JONES, O.**  
The Grammar of Ornament  
1856  
Pl. 76  
Renaissance no. 3.



**RACINET, A.**  
L'ornement polychrome  
1869  
Pl. LXVII  
Renaissance



**DOLMETSCH, H.**  
Der Ornementenschatz  
1887  
Taf. 55  
Italienische Renaissance  
Majolika-malerei







## Related Works

## OBJECT

Creator

Pulszky, Károly (1853-1899) (author, text by)  
Fischbach, Friedrich (1839-1908) (designer, designed by)  
Dorndorf, Bernhard (printing house, printed by)  
Hungarian National Museum, Budapest (museum, published by)

## Title

Textile from Pozsony county

## Date \_\_\_\_\_

1878

## Place

Hungary, Austria-Hungary, Germany

## Inventory number

E\_213\_045\_pl\_18

## Materials / Technique

paper, chromatography

## Measurements

37.7 x 26 cm

## Description

The ornamental print illustrates the motifs of different textiles from Naszód (Kolozs county, territory of the

## Provenance

Count Jenů Zichy

## Repository name

The Rare Book Collection of the Schola Graphidis Art Collection,  
Budapest

## Location

Hungary

## REPRESENTATION

## Related Works

Actor

Flóris Rómer (keeper)  
János Xántus (keeper)  
Count Jenő Zichy (donator)

## Institution

Hungarian National Museum, Budapest

## HISTORICAL CONTEXT

## Period

Historicism, 19th century

Related event

World Exposition 1873 Vienna

### Thematic context

Drawing. Design. Applied arts and crafts  
Industrial and domestic arts and crafts. Applied arts  
Graphic art, printmaking. Graphics  
Planographic techniques. Lithography (autolithography)  
Architecture  
Art education  
Industrial education

Cultural Heritage

Visual Works

Object Type

Prints



## Related Works

## OBJECT

Creator

Pulszky, Károly (1853-1899) (author, text by)  
Fischbach, Friedrich (1839-1908) (designer, designed by)  
Dorndorf, Bernhard (printing house, printed by)  
Hungarian National Museum, Budapest (museum, published by)

## Title

Textile from Pozsony county

## Date \_\_\_\_\_

1878

## Place

Hungary, Austria-Hungary, Germany

## Inventory number

E\_213\_045\_pl\_18

## Materials / Technique

paper, chromatography

## Measurements

37.7 x 26 cm

## Description

The ornamental print illustrates the motifs of different textiles from Naszód (Kolozs county, territory of the

## Provenance

Count Jenů Zichy

## Repository name

The Rare Book Collection of the Schola Graphidis Art Collection,  
Budapest

## Location

Hungary

## REPRESENTATION

## Related Works

Actor

Flóris Rómer (keeper)  
János Xántus (keeper)  
Count Jenő Zichy (donator)

## Institution

Hungarian National Museum, Budapest

## HISTORICAL CONTEXT

## Period

Historicism, 19th century

Related event

World Exposition 1873 Vienna

### Thematic context

Drawing. Design. Applied arts and crafts  
Industrial and domestic arts and crafts. Applied arts  
Graphic art, printmaking. Graphics  
Planographic techniques. Lithography (autolithography)  
Architecture  
Art education  
Industrial education



## Related Works

## OBJECT

**Creator**

Pulszky, Károly (1853-1899) (author, text by)  
Fischbach, Friedrich (1839-1908) (designer, designed by)  
Dorndorf, Bernhard (printing house, printed by)  
Hungarian National Museum, Budapest (museum, published by)

## Title

Textile from Pozsony county

## Date \_\_\_\_\_

1878

## Place

Hungary, Austria-Hungary, Germany

## Inventory number

E\_213\_045\_pl\_18

### Materials / Technique

paper, chromatography

## Measurements

37.7 x 26 cm

## Description

The ornamental print illustrates the motifs of different textiles from Naszód (Kolozs county, territory of the

## Provenance

Count Jenů Zichy

## Repository name

The Rare Book Collection of the Schola Graphidis Art Collection,  
Budapest

## Location

Hungary

## REPRESENTATION

## Related Works

Actor

Flóris Rómer (keeper)  
János Xántus (keeper)  
Count Jenő Zichy (donator)

## Institution

Hungarian National Museum, Budapest

## HISTORICAL CONTEXT

## Period

Historicism, 19th century

Related event

World Exposition 1873 Vienna

### Thematic context

Drawing. Design. Applied arts and crafts  
Industrial and domestic arts and crafts. Applied arts  
Graphic art, printmaking. Graphics  
Planographic techniques. Lithography (autolithography)  
Architecture  
Art education  
Industrial education



PURPOSE OF RESEARCH	UNITS OF DESCRIPTION	FIELDS	LIDO	QUESTIONS	THESAURI
PERSONS PRINTING HOUSES	OBJECT	Creator	[lido:eventActor] lido:actor lido:roleActor lido:extentActor		
		Title	lido:titleSet		
		Date	[lido:eventSet with lido:eventType] lido:eventDate		
		Place	[lido:eventPlace] lido:place		
		Inventory number	[lido:repositorySet with lido:type: „current”] lido:workID		
		Materials / Technique	[lido:eventSet with lido:eventType] lido:eventMaterialsTech		
		Measurements	lido:objectMeasurementsSet - lido:displayObjectMeasurements		
		Description	lido:objectDescriptionSet - lido:descriptiveNoteValue		
PERSONS		Provenance / Name	?		
		Provenance / Date	[lido:eventSet@lido:eventType=„provenance”] lido:eventDate		
		Repository name	[lido:repositorySet@lido:type=“current”] lido:repositoryName		
		Location	[lido:repositorySet@lido:type=“current”] lido:repositoryLocation		
	REPRESENTATION	Related works	lido:relatedWorkSet with - lido:relatedWork-> lido:objectWebResource and lido:objectNote - lido:relatedWorkRelType		
		Cultural context	? [lido:eventSet with lido:eventType] - lido:culture	[eventSet] – in the case of the ornamental prints, it is associated with the subject and not with the event	
		Subject	lido:subjectSet with - lido:subjectConcept or lido:subjectActor or lido:subjectDate or lido:subjectPlace		
RESOURCES		Related works	lido:relatedWorkSet with - lido:relatedWork-> lido:objectWebResource and lido:objectNote - lido:relatedWorkRelType		
PERSONS	HISTORICAL CONTEXT	Actor	?	The <b>Persons</b> who are not involved directly in the production of the object, but involved in the broader context of the production? They do not belong either to the subjectSet.	
SCHOOLS		Institution	?	The <b>Institutions</b> who are not involved directly in the production of the object, but involved in the broader context of the production? They do not belong either to the subjectSet.	
		Period	[lido:eventSet with lido:eventType] - lido:periodName	[eventSet]	
		Related event	? [lido:relatedEventSet]	The <b>world exhibitions’</b> data do not belong to the subjectSet, since these events are not the subjects of the object. Is that OK if I interpret this data in the relatedEventSet?	
		Thematic context	lido:classification with @lido:type=“universal classification” and @lido:source=“UDC”		

Cultural Heritage

Visual Works

Object Type

Prints

# COLLECTION OF PLASTER CASTS



Photograph © János Fejér





---

## SIX OBJECT CATEGORIES

---

# BUSTS



Photograph © János Fejér

## FULL-LENGTH FIGURES



Photograph © János Fejér

# ANATOMICAL CASTS



Photograph © János Fejér



# RELIEFS



Photograph © János Fejér

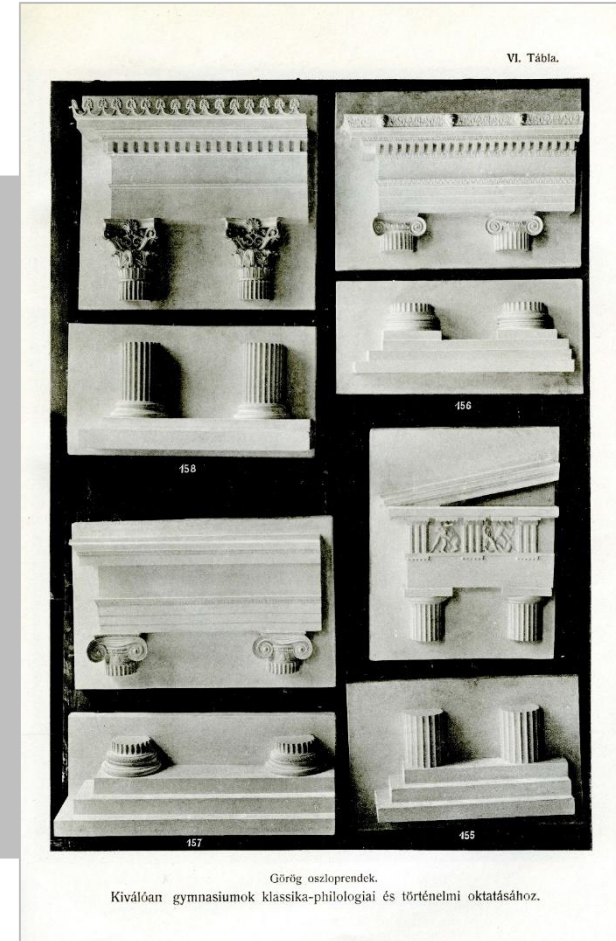
# ORNAMENTAL CASTS



Photograph © János Fejér



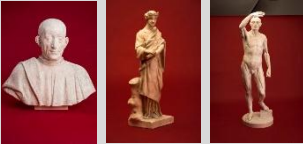
# ARCHITECTURAL CASTS



Photograph © János Fejér

Object / Work Type

**Sculptures**  
[visual works by material and technique]

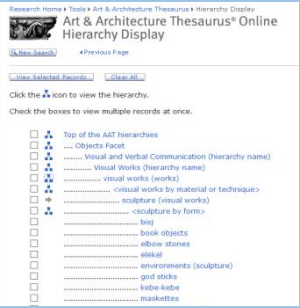


**Models**  
[visual works by function]

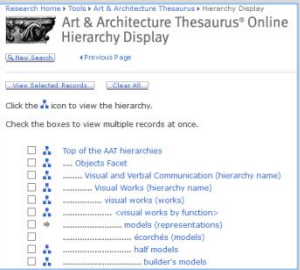


Object / Work Type

**Sculptures**  
[visual works by material and technique]



**Models**  
[visual works by function]



<http://vocab.getty.edu/aat/300047090>

<http://www.getty.edu/vow/AATFullDisplay?find=&logic=AND&note=&subjectid=300047090>

<http://vocab.getty.edu/aat/300047753>

<http://www.getty.edu/vow/AATFullDisplay?find=&logic=AND&note=&subjectid=300047753>





Cultural Heritage

Visual Works

Object Type

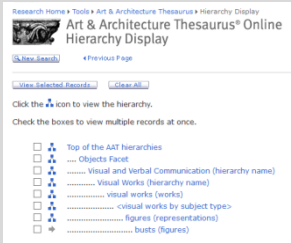
Models



Object / Work Type

**Busts**

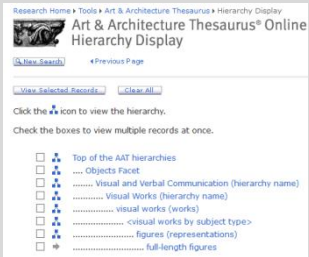
[visual works by subject type]



Object / Work Type

**Full-length figures**

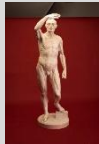
[visual works by subject type]



Object / Work Type

**Anatomical casts**

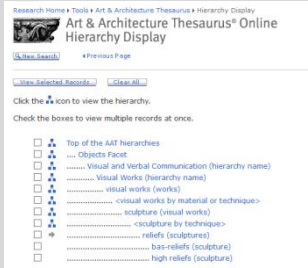
[no AAT reference]



Object / Work Type

**Reliefs**

[visual works by material and technique]



Object / Work Type

**Ornamental casts**

[no AAT reference]



Object / Work Type

**Architectural casts**

[no AAT reference]



<http://vocab.getty.edu/aat/30004745>  
Z

<http://www.getty.edu/vow/AATFullDisplay?find=&logic=AND&note=&subjectid=300047457>

<http://vocab.getty.edu/aat/30034359>  
2

<http://www.getty.edu/vow/AATFullDisplay?find=&logic=AND&note=&subjectid=300343592>

<http://vocab.getty.edu/aat/30004723>  
Q

<http://www.getty.edu/vow/AATFullDisplay?find=&logic=AND&note=&subjectid=300047230>



## Related Works

## SIMILAR COPIES

**Cultural context**  
Ancient Greek

Subjects  
copies  
mythology



Creator

Plaster Cast Atelier of the Metropolitan Hungarian Royal Architectural Technical School

## Title

Bust of Pallas Athena

## Date

beginning of the 20th century

## Place

Austria-Hungary

## Inventory number

2015.600.075

### Materials / Technique

plaster cast

## Measurements

70 x 45 x 30 cm

### Description

## Provenance

## Repository name

Collection of Plaster Casts and Sculptures of the Schola Graphidis  
Art Collection, Hungarian University of Fine Arts - High School of  
Visual Arts, Budapest

## Location

Hungary

## THE ORIGINAL WORK

## Related Works



## HISTORICAL CONTEXT

**Period**  
Historicism, 19th century,  
20th century

### Thematic context

Plastic arts. Sculpture in general. Statuary

## Art education

### Industrial education





## Related Works

## SIMILAR COPIES

**Cultural context**  
Romanesque

## Romanesque

## Subjects

copies

architecture

motifs

ornaments



**Creator**

Plaster Cast Atelier of the Metropolitan Hungarian Royal Architectural Technical School

## Title

### Romanesque Frieze

## Date

beginning of the 20th century

## Place

Austria-Hungary

## Inventory number

2015.600.057

### Materials / Technique

plaster cast

## Measurements

70.5 x 18 x 3 cm

### Description

## Provenance

## Repository name

Collection of Plaster Casts and Sculptures of the Schola Graphidis  
Art Collection, Hungarian University of Fine Arts - High School of  
Visual Arts, Budapest

## Location

Hungary

## THE ORIGINAL WORK

## Related Works



## HISTORICAL CONTEXT

## Period

Historicism, 19th century,  
20th century

### Thematic context

## Architecture

## Art education

Industrial education



Thank you for your attention / [julia.katona@mke.hu](mailto:julia.katona@mke.hu) / Schola Graphidis Art Collection, Budapest